

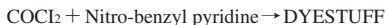
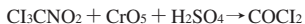
## 1. PERFORMANCE

- |                          |  |            |
|--------------------------|--|------------|
| 1) Measuring range       | : 0.1-16 ppm   | 0.05-8 ppm |
| Number of pump strokes   | 1 (100mℓ)  | 2 (200mℓ)  |
| 2) Sampling time         | : 1.5 minutes/1 pump stroke  |            |
| 3) Detectable limit      | : 0.02 ppm (200mℓ)   |            |
| 4) Shelf life            | : 1 year (Necessary to store in refrigerated conditions ; 0 ~ 10 °C) |            |
| 5) Operating temperature | : 0 ~ 40 °C  |            |
| 6) Reading               | : Direct reading from the scale calibrated by 1 pump stroke          |            |
| 7) Colour change         | : White → Pink   |            |

## 2. RELATIVE STANDARD DEVIATION

RSD-low : 10%    RSD-mid. : 10%    RSD-high : 10%

## 3. CHEMICAL REACTION



## 4. CALIBRATION OF THE TUBE

GAS CHROMATOGRAPHY

## 5. INTERFERENCE AND CROSS SENSITIVITY

Substance	Interference	Coexistence
Carbon tetrachloride	Similar stain is produced.	Higher readings are given.
Phosgene	〃	〃
Aliphatic hydrocarbons	The accuracy of readings is not affected.	The accuracy of readings is not affected.

### (NOTE)

When the concentration is below the scale ranges, 2 pump strokes can be used to determine lower concentration with the following formula ;

Actual concentration =  $1/2 \times$  Reading value