

1. PERFORMANCE

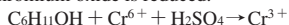
- 1) Measuring range : 5-500 ppm
Number of pump strokes : 2 (200ml)
- 2) Sampling time : 3 minutes/2 pump strokes
- 3) Detectable limit : 2 ppm
- 4) Shelf life : 2 years
- 5) Operating temperature : 10 ~ 40 °C
- 6) Temperature compensation : Necessary (See "TEMPERATURE CORRECTION TABLE")
- 7) Reading : Direct reading from the scale calibrated by 2 pump strokes
- 8) Colour change : Yellow → Pale blue

2. RELATIVE STANDARD DEVIATION

RSD-low : 10% RSD-mid. : 10% RSD-high : 10%

3. CHEMICAL REACTION

Chromium oxide is reduced.



4. CALIBRATION OF THE TUBE

GAS CHROMATOGRAPHY

5. INTERFERENCE AND CROSS SENSITIVITY

Substance	Interference	Coexistence
Aliphatic hydrocarbons (more than C ₃)	Whole reagent is changed to Pale brown.	The accuracy of reading is not affected.
Aromatic hydrocarbons	∕	∕
Halogenated hydrocarbons	∕	∕
Alcohols FIG.1	Similar stain is produced.	Higher readings are given.
Esters	Pale ringed stain is produced near the bottom of the reagent.	The accuracy of reading is not affected.

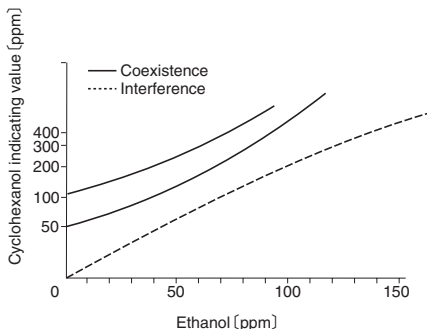


FIG.1 Influence of Ethanol

TEMPERATURE CORRECTION TABLE

Tube Readings (ppm)	Corrected Concentration (ppm)							
	10 °C (50 °F)	15 °C (59 °F)	20 °C (68 °F)	25 °C (77 °F)	30 °C (80 °F)	35 °C (95 °F)	40 °C (95 °F)	
500	—	—	500	380	280	210	160	
400	—	520	400	300	230	170	130	
300	—	400	300	220	170	130	100	
200	—	270	200	140	110	90	70	
100	230	140	100	90	70	50	40	
50	90	70	50	40	35	20	15	
30	50	40	30	25	18	14	10	
10	18	13	10	8	6	4	2	
5	9	7	5	4	3	2	1	