

## CORIO CD-1001F Refrigerated – Heating Circulator

Refrigerated / Heating Circulators of the new CORIO series distinguish themselves with a great price-to-performance ratio. They are ideal for all standard tasks and routine work in laboratories and industry.



### Your advantages

- Bright, white, easy to read display
- Models for internal and external applications
- Very quiet
- Easy pump change-over between internal and external circulation
- Very quiet
- USB connection
- Class III (FL) according to DIN 12876-1
- External pump connections
- Space-saving cooling coil design yields more usable space in the bath tank
- High-quality bath tanks made of stainless steel with bath lid and drain tap
- Bath lid and drain tap included
- Removable ventilation grid
- Refrigeration unit without side vents

### Technical data

Available voltage versions		Bath	
Order No.	9 012 708	Bath tank	Stainless steel
Available voltage versions:		Bath cover	integrated
9 012 708.03	230V/50Hz (Schuko Plug - CEE 7/4 Plug Type F)	Usable bath opening cm (W x L / D)	35 x 41 / 30
9 012 708.03.chn	230V/50Hz (CN Plug)		
9 012 708.04	230V/50Hz (UK Plug Type BS1363A)		
9 012 708.05	230V/50Hz (CH Plug Type SEV 1011)		
9 012 708.13	230V/60Hz (Schuko Plug - CEE 7/4 Plug Type F)		
9 012 708.12	200V/50-60Hz (Nema N6-20 Plug)		
Cooling		Other	
Cooling of compressor	1-stage Air	Classification	Classification III (FL)
		IP Code	IP 21
		Pump function	Pressure Pump
		Pump type	Immersion Pump
Electronics		Dimensions and volumes	
Temperature control	PID1	Weight kg	74
Absolute temperature calibration	1 Point Calibration	Barbed fittings inner diameter	8/12 mm
Temperature display	LED	Dimensions cm (W x L x H)	45 x 64 x 95
Temperature setting	Keypad	Filling volume l	42 ... 56
		Pump connections	M16x1 male
Temperature values			
Setting display resolution °C	0.1		
Working temperature range °C	-38 ... +100		
Temperature stability °C	±0.03		

Ambient temperature °C	+5 ... +40
Temperature display resolution °C	0.01 ... 0.1

## Power and capacities

### 230V/50Hz (Schuko Plug - CEE 7/4 Plug Type F)

230V/50Hz							
Heating capacity kW	2						
Cooling capacity (Ethanol)							
°C	20	10	0	-10	-20	-30	-40
kW	1	0.95	0.9	0.63	0.35	0.13	
Viscosity max. cST	50						
Refrigerant	R449A						
Filling volume g	170						
Global Warming Potential for R449A	1397						
Carbon dioxide equivalent t	0.237						
Pump capacity flow rate l/min	15						
Pump capacity flow pressure bar	0.35						

### 230V/50Hz (CN Plug)

230V/50Hz							
Heating capacity kW	2						
Cooling capacity (Ethanol)							
°C	20	10	0	-10	-20	-30	-40
kW	1	0.95	0.9	0.63	0.35	0.13	
Viscosity max. cST	50						
Refrigerant	R449A						
Filling volume g	170						
Global Warming Potential for R449A	1397						
Carbon dioxide equivalent t	0.237						
Pump capacity flow rate l/min	15						
Pump capacity flow pressure bar	0.35						

### 230V/50Hz (UK Plug Type BS1363A)

230V/50Hz							
Heating capacity kW	2						
Cooling capacity (Ethanol)							
°C	20	10	0	-10	-20	-30	-40
kW	1	0.95	0.9	0.63	0.35	0.13	
Viscosity max. cST	50						
Refrigerant	R449A						
Filling volume g	170						
Global Warming Potential for R449A	1397						
Carbon dioxide equivalent t	0.237						

Pump capacity flow rate l/min	15
Pump capacity flow pressure bar	0.35

230V/50Hz (CH Plug Type SEV 1011)

230V/50Hz	
Heating capacity kW	2
Cooling capacity (Ethanol)	
°C	20 10 0 -10 -20 -30 -40
kW	1 0.95 0.9 0.63 0.35 0.13
Viscosity max. cST	50
Refrigerant	R449A
Filling volume g	170
Global Warming Potential for R449A	1397
Carbon dioxide equivalent t	0.237
Pump capacity flow rate l/min	15
Pump capacity flow pressure bar	0.35

230V/60Hz (Schuko Plug - CEE 7/4 Plug Type F)

230V/60Hz	
Heating capacity kW	2
Cooling capacity (Ethanol)	
°C	20 10 0 -10 -20 -30
kW	1 0.95 0.9 0.63 0.35 0.13
Viscosity max. cST	50
Refrigerant	R449A
Filling volume g	170
Global Warming Potential for R449A	1397
Carbon dioxide equivalent t	0.237
Pump capacity flow rate l/min	17
Pump capacity flow pressure bar	0.43

200V/50-60Hz (Nema N6-20 Plug)

200V/50Hz	
Heating capacity kW	1.5
Cooling capacity (Ethanol)	
°C	20 10 0 -10 -20 -30
kW	1 0.95 0.9 0.63 0.35 0.13
Viscosity max. cST	50
Refrigerant	R449A
Filling volume g	170
Global Warming Potential for R449A	1397
Carbon dioxide equivalent t	0.237
Pump capacity flow rate l/min	12
Pump capacity flow pressure bar	0.3

200V/60Hz	
Heating capacity kW	1.5
Cooling capacity (Ethanol)	
°C	20 10 0 -10 -20 -30
kW	1 0.95 0.9 0.63 0.35 0.13
Viscosity max. cST	50
Refrigerant	R449A
Filling volume g	170
Global Warming Potential for R449A	1397
Carbon dioxide equivalent t	0.237
Pump capacity flow rate l/min	14
Pump capacity flow pressure bar	0.33

**Benefits**



**100% Checked.**  
100% testing. 100% quality. Each JULABO Circulator undergoes thorough quality testing before leaving the factory.



**ATC.**  
Absolute Temperature Calibration, 1-point calibration (CD).



**Handle with ease.**  
Makes day-to-day work easy. Comfortably move your JULABO Circulator around by using the ergonomic handles (front and rear).



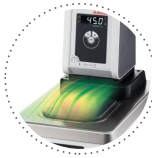
**Mobile.**  
Extra easy handling. Integrated castors for easy repositioning of refrigerated circulators.



**More bath.**  
Designed for more comfort. Thanks to the recessed cooling coil, the internal bath provides more space.



**Space saving. Free up space.**  
Place your JULABO Circulator right next to an application, another unit, or wall. That saves space. This is made possible by eliminating vents and connections on the sides.



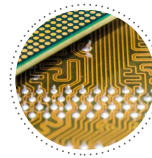
**Condensation protection.**  
Superb design solution. Integrated ventilation directs air over the bath lid and minimizes condensation.



**Green technology.**  
Development consistently applied environmentally friendly materials and technologies.



**Internal. External.**  
The pump is controlled via a lever located directly below the display. Easily change between internal and external circulation.



**Modern. Reliable.**  
High-grade components in every JULABO Circulator – platinum sensors, proven motor technology, CAN-Bus communication and much more.



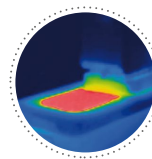
**Safety.**  
CORIO CD and CP comply with Class III (FL) according to DIN 12876-1 and switches off automatically in case of high temperature or low liquid level alarm.



**Satisfied customers.**  
11 subsidiaries and more than 100 partners worldwide guarantee fast and qualified JULABO support.



**Services 24/7.**  
Around the clock availability. You can find suitable accessories, data sheets, manuals, case studies, and more at [www.julabo.com](http://www.julabo.com).



**Solid.**  
Minimized energy loss through high-quality insulation.



**Stable.**  
Rubber feet allow for a secured footing of your CORIO to prevent damage to your laboratory equipment.



**Tidy.**  
The special drain tap for easy draining of bath fluids without tools.



**Touching permitted.**  
Optimum safety. The ergonomic plastic handle protects your fingers from hot surfaces.



**JULABO. Quality.**  
Highest standards of quality for a long product life.



**Quick start.**  
Individual JULABO consultation and comprehensive manuals at your disposal.



**Timer. Integrated.**  
CORIO circulators include an integrated timer function. When the set time has elapsed, a signal sounds and the device switches off. Setting range: 0 ... 999 minutes.



**Brilliant.**  
Very bright display makes it easy to read even from a distance.



**Connection. Easy.**  
Inclined pump connections (M16×1) facilitate the connection of applications. Each unit includes 2 barbed fittings of 8/12 mm diameter each.



**Everything at the front.**  
All operating controls and safety functions are accessed easily and comfortably from the front.



**Exact.**  
You can rely on it. PID1 control and 'Active Cooling Control' make the new CORIO precise and perfect.



**Locked in.**  
The lockable power plug guarantees safe connection. More process safety.



**Switch on. And off you go.**  
Intelligent operating concept. Ready for operation with just a few quick and easy steps.



**Early warning system for low liquid level**  
Maximum safety for applications, optical and audible alarm, allows user to refill bath fluid before the unit shuts down



**Connectivity.**  
Remote control made easy. CORIO CD circulators feature a USB connection.